



Aarhus Universitet
AU Økonomi og Bygninger
APV rapport

Antal besvarelser: 119
Svarprocent: 89%

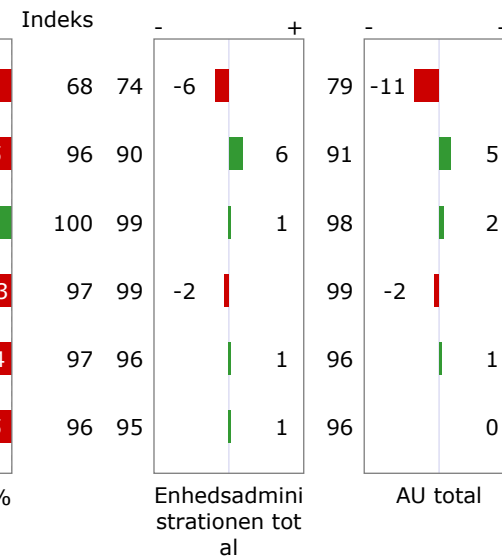
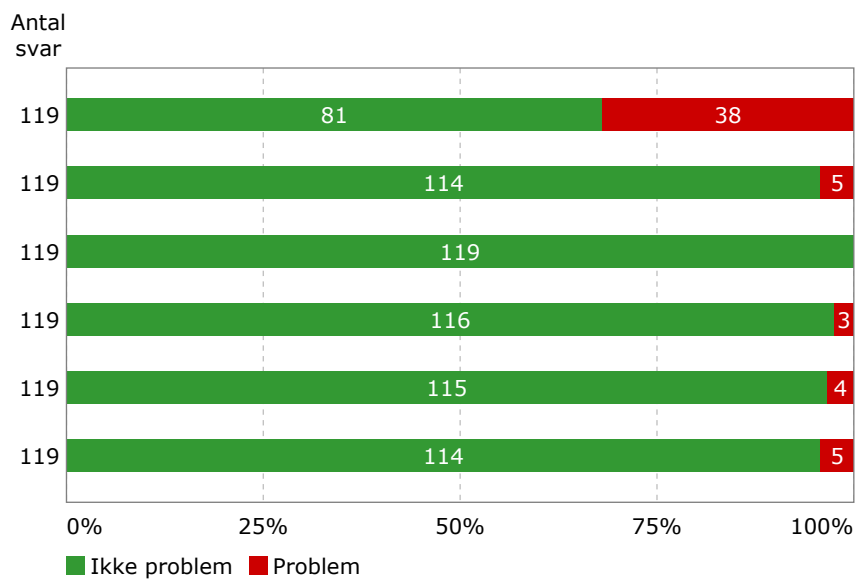
FYSISK ARBEJDSPLADSVURDERING

RAMBOLL



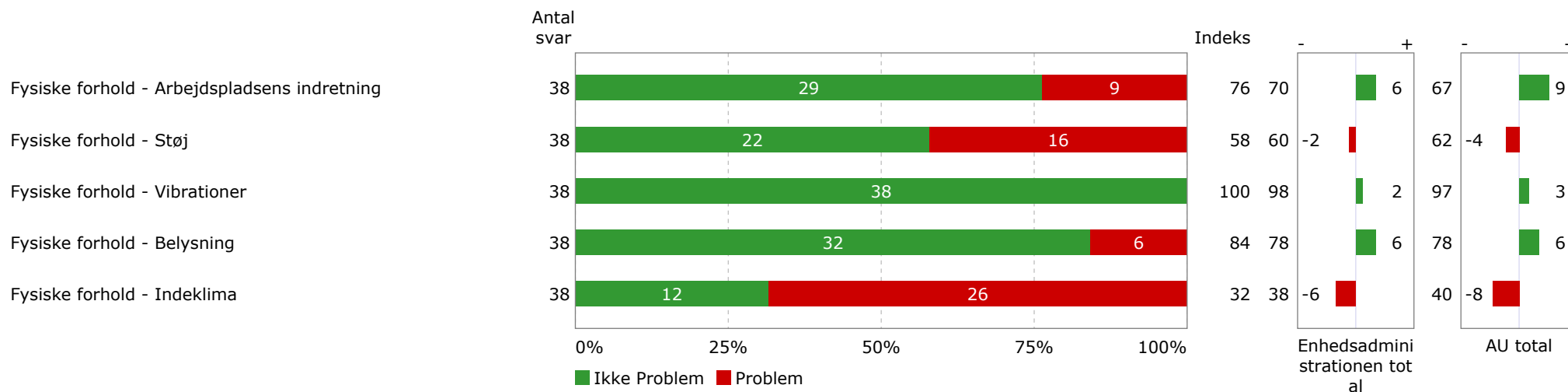


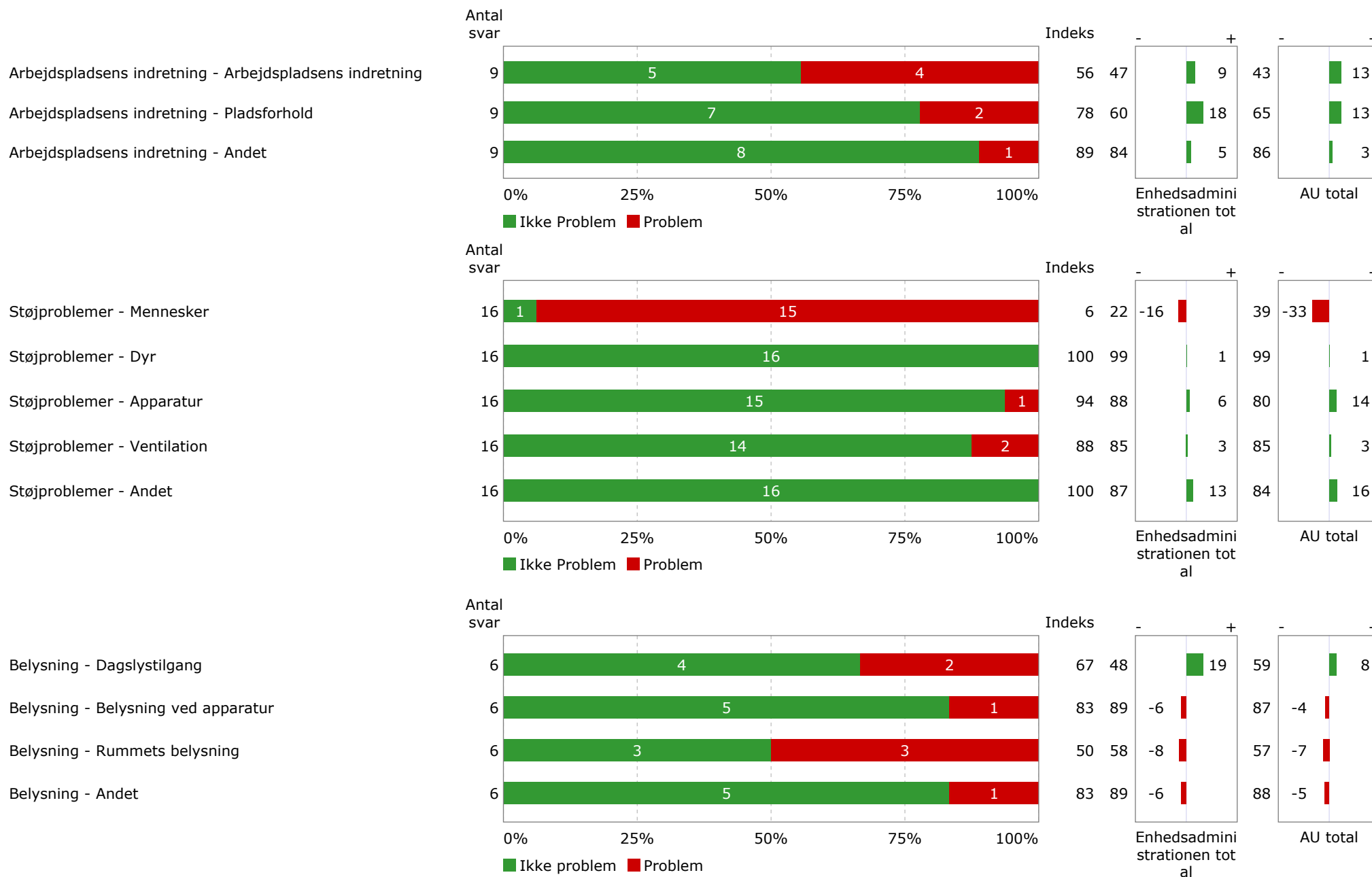
- 1. FYSISKE FORHOLD
- 2. ERGONOMISKE FORHOLD
- 3. KEMISKE FORHOLD
- 4. BIOLOGISKE FORHOLD
- 5. ULYKKESFARER
- 6. SYGEFRAVÆR

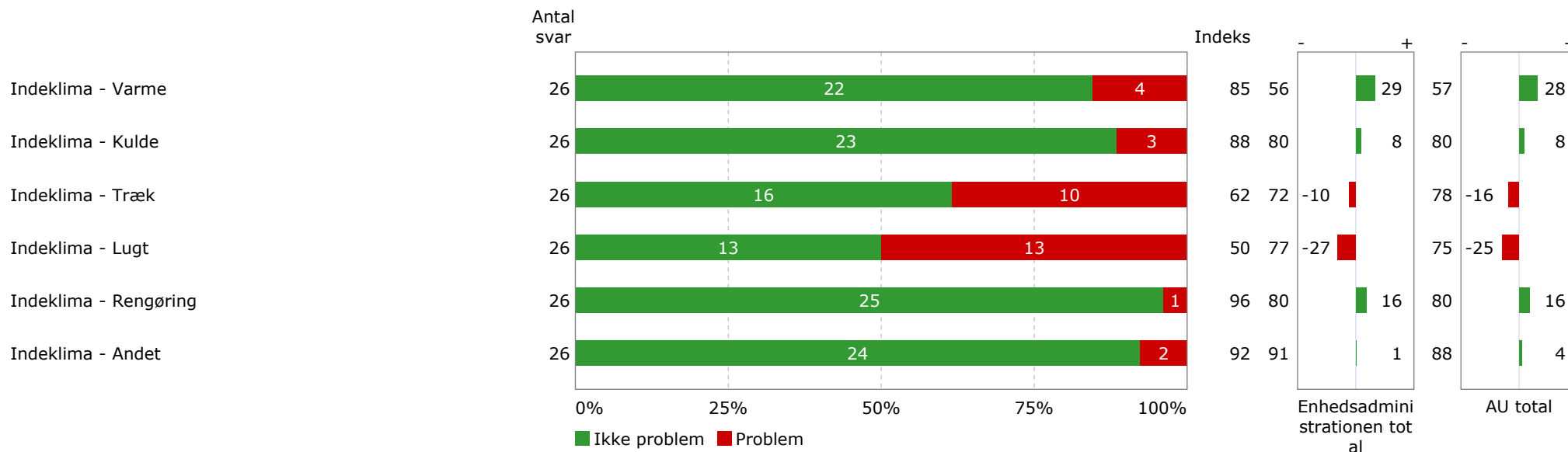




1. FYSISKE FORHOLD







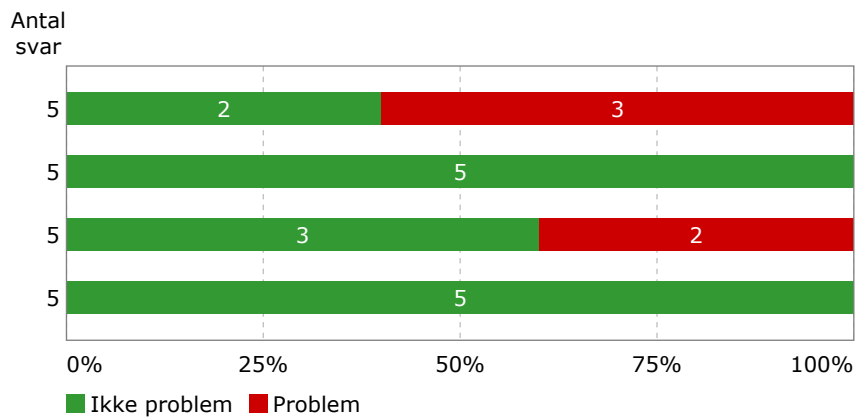


Ergonomiske problemer - Arbejdsstillinger

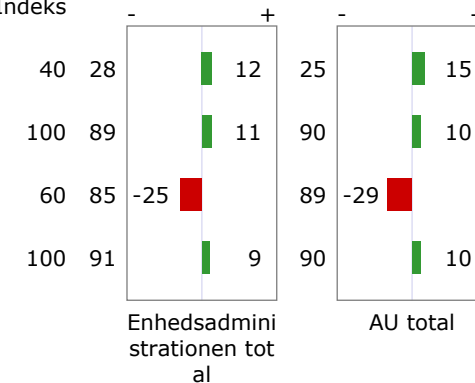
Ergonomiske problemer - Ensidigt gentaget arbejde

Ergonomiske problemer - Løft

Ergonomiske problemer - Andet



Indeks





4. BIOLOGISKE FORHOLD

